



Part number:

LDC-50

Low profile linear Stage:

Series of motorized high-precision stages

Travel range:

25-50-100mm

Motor type:

Stepper or DC Servo brushed

Motor Voltages:

6 -30V DC

Motor current:

Maximum 500mA

Encoder pulses per rotation:

1024 (4096 optionally)

Microsteps per rotation:

4320 (continuous wave optionally)

Anti-backlash nut/screw pitch:

0.5mm/turn

Moving platform:

Recirculating crossroller bearings

Yaw/Pitch angle:

75 μ rad

Bi-directional repeatability:

+/- 1 μ m (when spring preloaded)

Positioning error:

less than 10 μ m over 10mm travel

Configurations:

X axis, XY or XYZ

Maximum rated speed:

2.5mm/s


Maximum normal load:

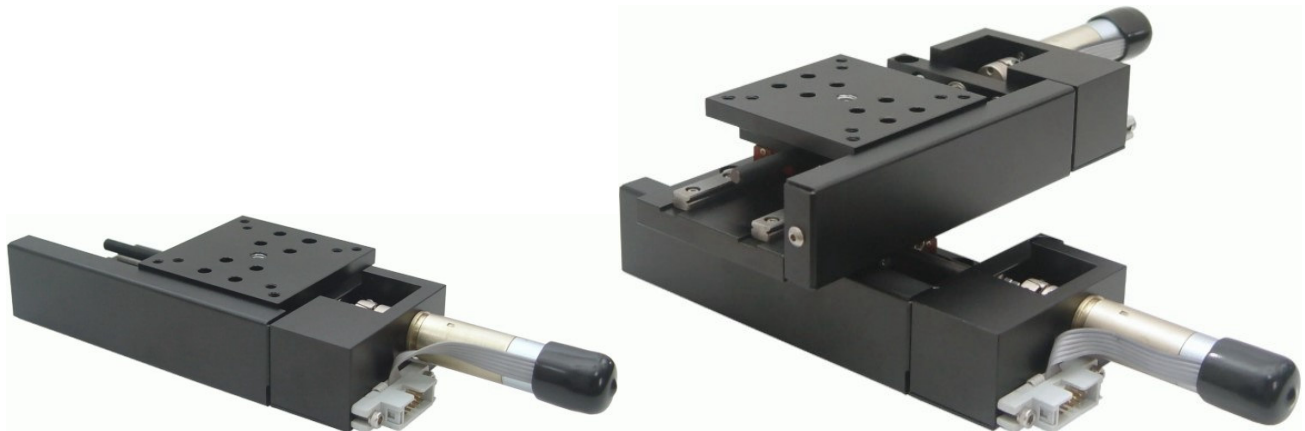
35N

Available options:

Non-contact limit switches, Index

Recommended controller:

DSP-21 

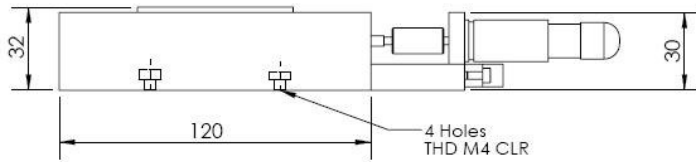
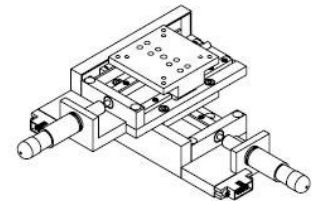
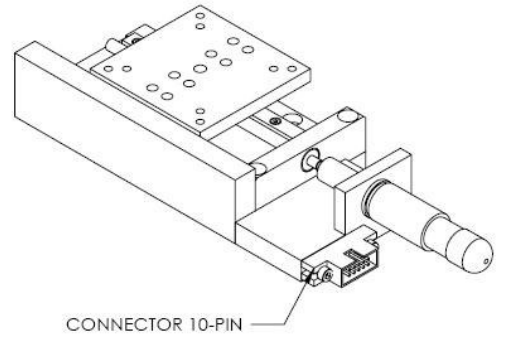
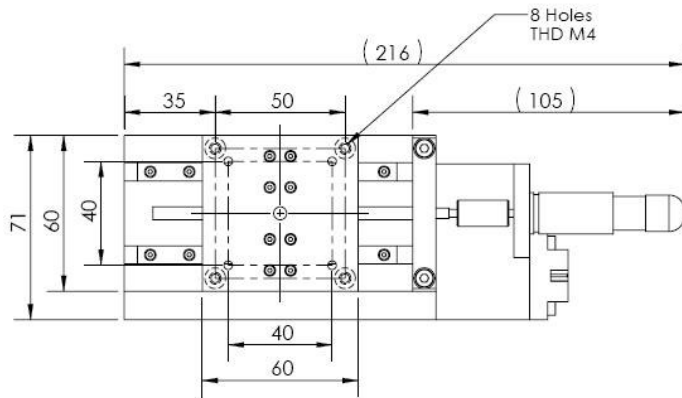


LDC-50

The lead screw is Teflon coated and ensures high precision movement as well as a high life time. The special guides provide backlash-free motion and a high load capacity. All aluminum parts have a top quality black anodized protective coating.

The high-precision linear stages of the **LDC-50** series are characterized by high precision, which is necessary for demanding **R&D** applications. Due to their suitability for continuous operation, they are also an appropriate choice for industrial applications.

- **Fiber stretching,**
- **Optical alignment**
- **Microscopy**
- **Delay lines.**



DC Gearhead Servo motor version drawing