



Part number:

LDC-1500

Long travel Linear Stage:

Series of motorized high-precision stages

Travel range:

400-600-1000 and 1500mm or 5ft 11"

Motor type:

2 Phase bipolar Stepper or DC Servo brushed

Motor Voltages:

24 or 48V DC

Motor current:

Maximum 4A

Encoder pulses per rotation:

10000

Full steps per rotation:

200

Backlash-free ball screw pitch/dia:

5mm/turn

Moving platform:

With preloaded recirculating ball bearings

Yaw/Pitch angle:

75 μ rad

Bi-directional repeatability:

3 μ m

Positioning error:

less than 10 μ m over 100mm travel

Maximum rated speed:

150mm/s with DC Servo motor


Maximum normal load:

1500N

Available options:

Linear encoder, non-contact limit switches, brake,

Recommended controller:

DCX-1250 

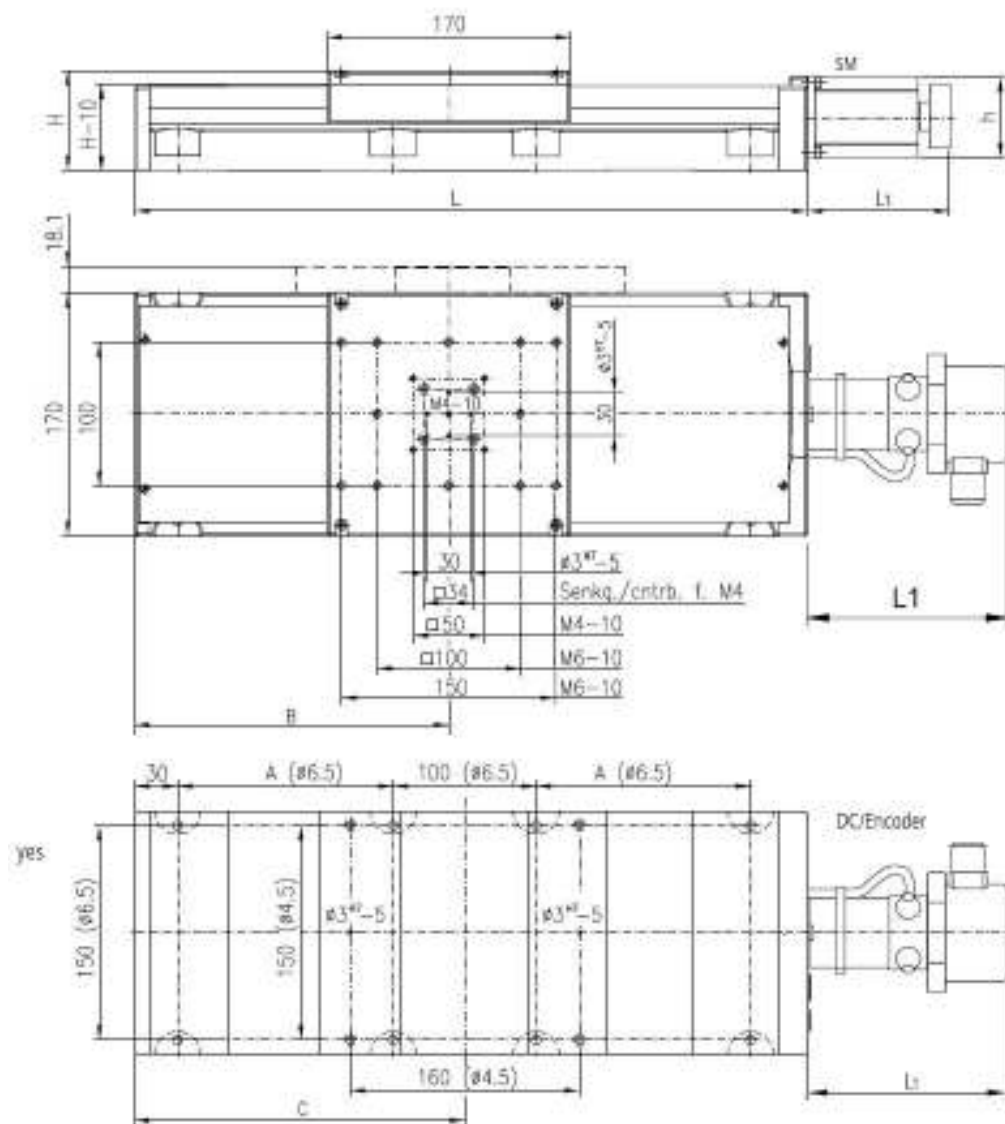


LDC-1500

- The high-precision linear stages of the **LDC-1500** series are characterized by high precision, which is necessary for demanding **R&D** applications.
- Due to their suitability for continuous operation, they are also an appropriate choice for industrial applications. The special guides provide backlash-free motion and a high load capacity.
- The ball screw is preloaded and ensures high precision movement as well as a high life time. All aluminum parts have a top quality black anodized protective coating.



Pacific Laser Equipment



travel	L	A	B	C	H	Motor	Encoder	L1	h
400	765	300	360	380	70,00	DS 220	yes	124,00	58,00
400	765	300	360	380	70,00	DS 220	no	106,00	58,00
400	765	300	360	380	70,00	SM 280	no	100,00	56,40
600	965	400	460	480	70,00	DS 220	yes	124,00	58,00
600	965	400	460	480	70,00	DS 220	no	106,00	58,00
600	965	400	460	480	70,00	SM 280	no	100,00	56,40
1000	1370	600	640	680	80,00	DS 330	yes	163,00	69,00
1000	1370	600	640	680	80,00	DS 330	no	147,00	69,00
1000	1370	600	640	680	80,00	SM 290	no	116,00	86,00
1500	1870	850	1140	930	80,00	DS 330	yes	163,00	69,00
1500	1870	850	1140	930	80,00	DS 330	no	147,00	69,00
1500	1870	850	1140	930	80,00	SM 290	no	116,00	86,00