



Part number:

LDC-25

Miniature motorized stage:

Linear, cross roller bearing

Expansion range:

Up to 25mm or 1"

DC brushed motor voltage:

6V or 12V.

Nominal load current:

160mA

Planetary Gearhead ratios:

34.165:1 – 63.75:1 -137.2:1

Rotary encoder:

10bit (1024 encoder counts per motor revolution)

Lead screw pitch/dia:

0.012" / 0.123" (0.305mm/turn)

Design/measured resolution:

0.0043 μ m / 0.05 μ m

Bi-directional repeatability:

3 μ m

Maximum rated speed:

150,000 cps.(~1.5mm/s with 34.3:1 gearhead motor)

Maximum normal load:

50N


Installed options:

Position feedback, non-contact limit switches.

Dimensions:

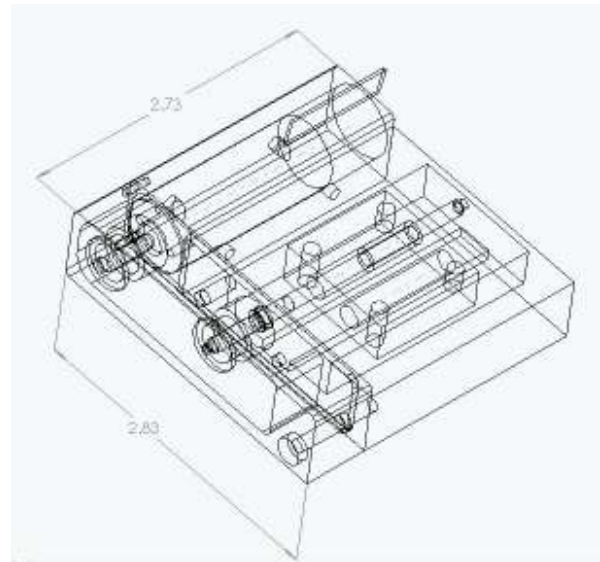
69 x 72 x 18mm

Recommended controller:

DSP-21 



Photo



3-D

The stage is delivered with a 30cm long ribbon cable equipped with an IDC 10pin connector.

The pin-out is listed below:

Pin 1

Pin 2

Pin 3

Pin 4

Pin 5

Pin 6

Pin 7

Pin 8

Pin 9

Pin 10

Motor +

+5V to encoder

Encoder Ch. A

Encoder Ch. B

Ground.

Motor -

Reference switch (optional)

Positive limit switch (optional)

Negative limit switch (optional)

Ground.