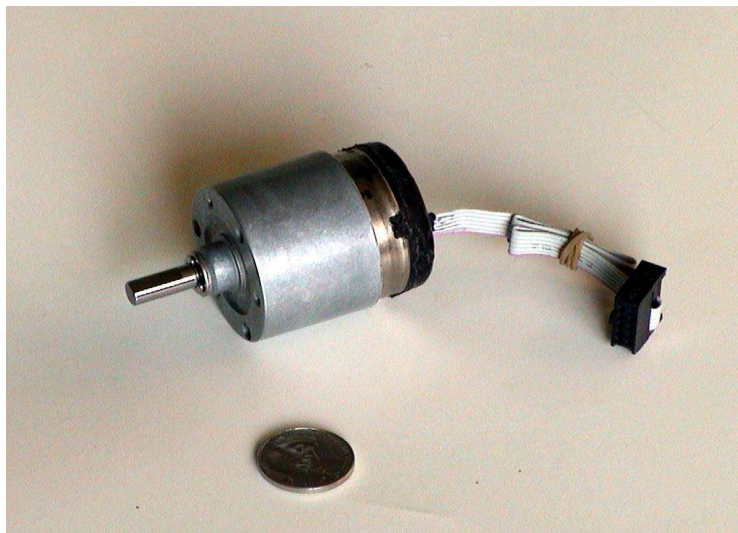


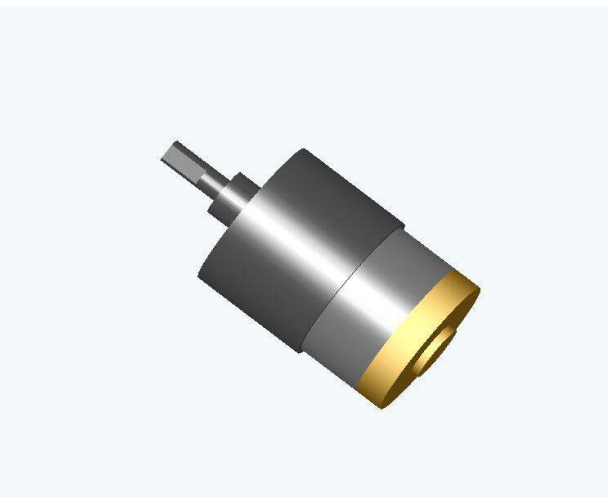


Part number: DCS39-1004

Motor: DC Brushed
Gearhead ratios: 8.75 :1 - 34.165:1 – 63.75:1 -137.2:1
Nominal Voltage: 12V or 24V
Rotary encoder: 10bit (1024 encoder counts per motor revolution)
Resolution: 0.351deg (6.1359mrad)
Nominal load current: 280mA
Maximum torque: 2000g-cm
Stalling torque: 10 N/cm (1.0lb/inch)
Rated speed: 15 to 600r.p.m. (depending on the gearhead used)
Available options: Index pulse. Absolute position.
Recommended controller: SuprMotrX
Dimensions: Diameter: 39mm. Max. length: 50mm.



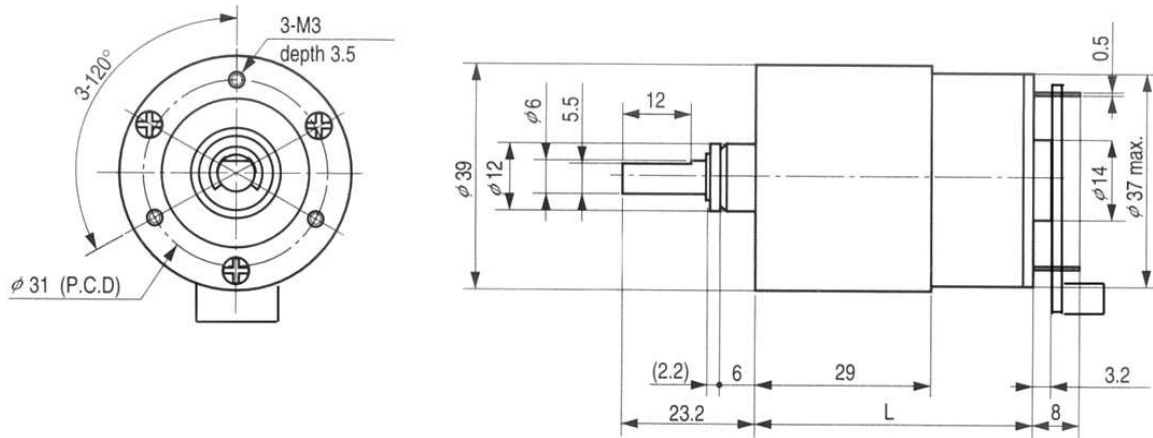
Photo



3-D

The ServoMotor is delivered with a 20cm long ribbon cable. An IDC 10pin connector can be optionally added. The pin-out is listed below:

Pin 1	Motor +
Pin 2	+5V to encoder
Pin 3	Encoder Ch. A
Pin 4	Encoder Ch. B
Pin 5	Ground.
Pin 6	Motor -
Pin 7	NC (optional Absolute or Index)
Pin 8	NC
Pin 9	NC
Pin 10	NC



DCS39-1004 Drawing