



Part number: **1PA-500K**

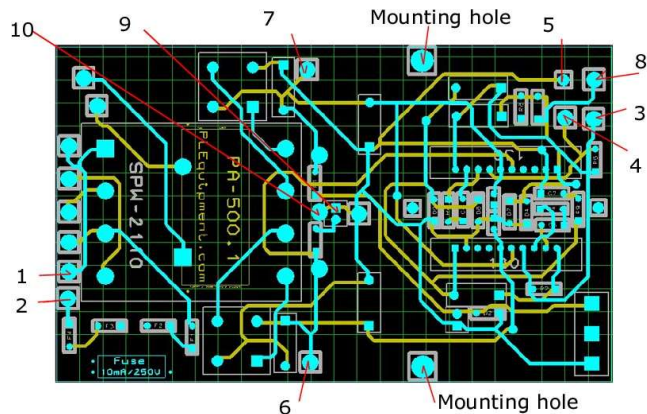
High voltage amplifier: Single or bipolar output (differential).
Output voltage range: 0-500V
Input voltage range: +/-5V
Max .current at 500V: 30mA
Max. slew rate with load: 50v/ μ s
Power required: 120V AC, 220V AC or 12V DC.
Available options: Offset, polarity and gain as ordered.

Dimensions: 125 x 75 x 55mm

Unit price ranges (Non OEM): \$895 to \$1.250 depending on the options.



Photo



Layout

The board amplifier is delivered with a 30cm long power cable attached as well as input and output wires. The pin-out is listed below:

Pin 1	120 or 220V AC
Pin 2	120 or 220V AC
Pin 3	Output Ch. A
Pin 4	Output Ch. B
Pin 5	Ground.
Pin 6	- V DC
Pin 7	+V DC
Pin 8	Input signal
Pin 9	Indicator of presence of high voltage
Pin 10	Ground.