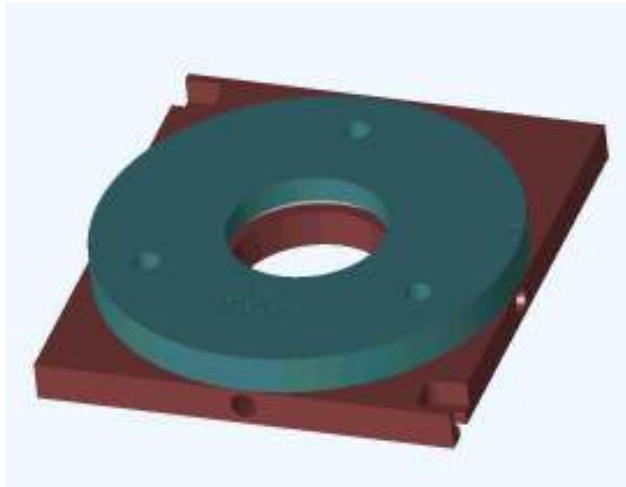


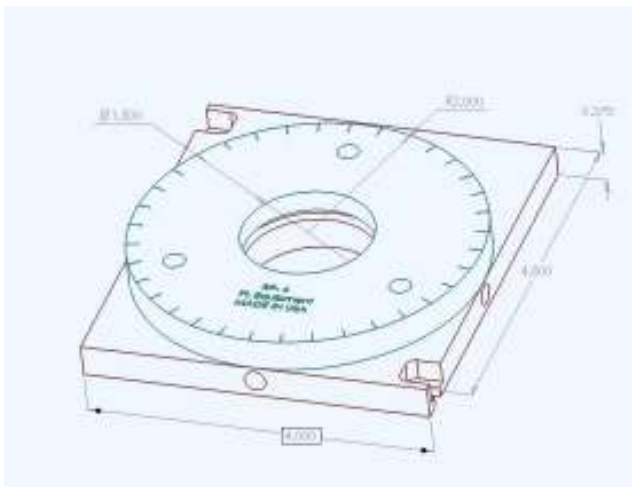


**Part number:** PRS-100

**Rotational stage:** Piezo motor driven.  
**Travel range:** 360 degrees continuous.  
**Maximum velocity:** 15rpm  
**Resolution:** 0.05mrad  
**Bi-directional repeatability:** 0.1mrad  
**Reference switch:** Hall effect.  
**Dimensions:** 4"x 4" x 1/2"  
**Recommended controller:** PSA-1001



Photo



3-D

The stage (when motorized) is delivered with a 3Ft long cable that plugs in the driving electronics.

The pin-out is listed below:

<b>Pin 1</b>	Analog input (+/- 10V).
<b>Pin 2</b>	+5V (200mA) power input.
<b>Pin 3</b>	Ch A.
<b>Pin 4</b>	Ch B.
<b>Pin 5</b>	Ground (GND).
<b>Pin 6</b>	24V (500mA) power input.
<b>Pin 7</b>	Reference switch 1 (optional)
<b>Pin 8</b>	NC
<b>Pin 9</b>	NC